

CI Emerging Markets Bond Fund

Series A CAD



AS AT DECEMBER 31, 2025

FUND OVERVIEW

The fund's objective is to obtain long-term total returns through interest income and capital gains by primarily investing in debt securities issued by governments, quasi-sovereign entities and corporates in emerging market countries, or that provide exposure to emerging markets. The fund may also invest in government debt securities of developed countries.

FUND DETAILS

Inception date	November 2023
CAD Total net assets (\$CAD) As at 2025-12-31	\$203.2 million
NAVPS	\$11.1552
MER (%) As at 2025-09-30	1.89
Management fee (%)	1.50
Asset class	Global Fixed Income
Currency	CAD
Minimum investment	\$500 initial/\$25 additional
Distribution frequency	Monthly
Last distribution	\$0.0475
Average Credit Rating	BBB-

Risk rating¹



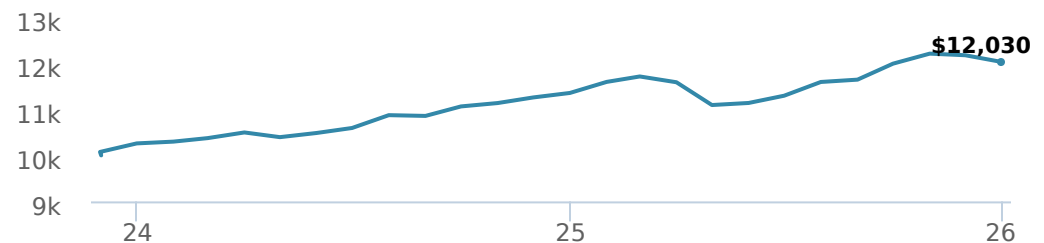
FUND CODES

A	ISC 2280 DSC SO* 3280 LL SO 1280
F	4280
I	5280
P	90010

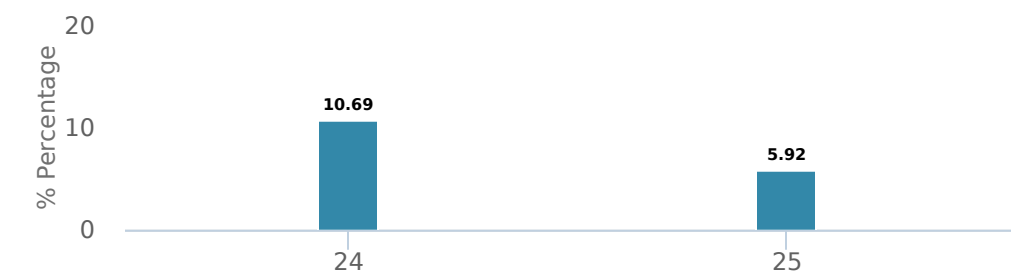
*No new purchases directly into switch only funds.

PERFORMANCE²

Growth of \$10,000 (since inception date)



Calendar year performance



Average annual compound returns

YTD	1 Mo	3 Mo	6 Mo	1 Y	3 Y	5 Y	10 Y	Inception*
5.92%	-1.21%	0.30%	6.48%	5.92%	-	-	-	8.97%

*Since inception date

DISTRIBUTION HISTORY³

Payable date	Total	Payable date	Total
2025-12-29	0.0475	2025-07-25	0.0268
2025-11-21	0.0262	2025-06-27	0.0384
2025-10-24	0.0262	2025-05-23	0.0283
2025-09-26	0.0382	2025-04-25	0.0295
2025-08-22	0.0272	2025-03-28	0.0409

FUND CHARACTERISTICS

Average Coupon %	5.05
Duration	5.39
Yield	5.34

RATING SUMMARY (%)

AA	12.42
A	10.86
BBB	29.03
BB	29.85
B	17.35
CCC	0.50
CC	0.00
D	0.00
NR	0.00
Average Credit Rating	BBB-

*Corporate and Government bonds only.

CI Emerging Markets Bond Fund

Series A CAD

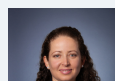


AS AT DECEMBER 31, 2025

PORTFOLIO ALLOCATIONS⁴

Asset allocation	(%)	Sector allocation	(%)	Geographic allocation	(%)
Foreign Government Bonds	77.98	Fixed Income	89.28	Canada	9.43
Foreign Corporate Bonds	11.30	Cash and Cash Equivalent	10.70	Mexico	6.39
Cash and Equivalents	10.70	Other	0.02	Nigeria	6.03
Other	0.02			Dominican Republic	5.70
				Indonesia	5.70
				Chile	5.17
				Paraguay	5.04
				Oman	4.68
				South Africa	3.68
				Cote D'Ivoire	3.60
				Egypt	3.59
				Brazil	3.54
				United Arab Emirates	3.36
				Colombia	3.27
				Saudi Arabia	3.26
				Qatar	3.08
				Peru	2.67
				Panama	2.27
				Guatemala	2.00
				United States	12.72
				Uzbekistan	1.02
				Uruguay	0.80
				Ecuador	0.76
				Cayman Islands	0.71
				Philippines	0.49
				Ukraine	0.39
				Luxembourg	0.26
				Other	0.10
				Turkey	0.04
				Argentina	0.03
				Poland	0.03
				Bahrain	0.02
				Hungary	0.02
				Malaysia	0.02
				Romania	0.02
				Angola	0.01
				China	0.01
				Costa Rica	0.01
				Ghana	0.01
				Hong Kong	0.01
				India	0.01
				Jamaica	0.01
				Kenya	0.01
				Morocco	0.01
				Sri Lanka	0.01
				United Kingdom	0.01

MANAGEMENT TEAM





Fernanda Fenton

CI Emerging Markets Bond Fund

Series A CAD



AS AT DECEMBER 31, 2025

TOP HOLDINGS⁵

	Sector	(%)
1. CASH	Cash and Cash Equivalent	9.40%
2. Nigeria Government 6.13% 28-Sep-2028	Fixed Income	4.33%
3. Oman Government 5.63% 17-Jan-2028	Fixed Income	3.51%
4. Abu Dhabi Emirate 3.13% 16-Apr-2030	Fixed Income	3.33%
5. Chile Government 3.50% 31-Oct-2033	Fixed Income	3.29%
6. Paraguay Government 4.95% 28-Jan-2031	Fixed Income	3.07%
7. Petroleos Mexicanos 6.70% 16-Feb-2032	Fixed Income	2.71%
8. Petroleos Mexicanos 6.84% 23-Jan-2030	Fixed Income	2.61%
9. Cote D'Ivoire Government 6.13% 15-Jun-2033	Fixed Income	2.41%
10. Galaxy Pipeline Asset BdCo Ltd 2.94% 30-Sep-2040	Fixed Income	2.00%
11. Dominican Republic Government 4.88% 23-Sep-2032	Fixed Income	1.99%
12. Qatarenergy 2.25% 12-Apr-2031	Fixed Income	1.96%
13. Minejesa Capital BV 4.63% 10-Aug-2030	Fixed Income	1.94%
14. Eskom Holdings SOC Ltd 8.45% 10-Aug-2028	Fixed Income	1.92%
15. Indonesia Government 4.70% 10-Nov-2033	Fixed Income	1.78%

Note: This page is not complete without disclaimers on the next page.

Over 35,000 financial advisors have chosen CI Global Asset Management as a partner. We believe that Canadians have the best opportunity for investments success by using the services of a professional financial advisor. [Learn more at ci.com.](#)

¹ The risk level of a fund has been determined in accordance with a standardized risk classification methodology in National Instrument 81-102, that is based on the fund's historical volatility as measured by the 10-year standard deviation of the fund's returns. Where a fund has offered securities to the public for less than 10 years, the standardized methodology requires that the standard deviation of a reference mutual fund or index that reasonably approximates the fund's standard deviation be used to determine the fund's risk rating. Please note that historical performance may not be indicative of future returns and a fund's historical volatility may not be indicative of future volatility.

² Commissions, trailing commissions, management fees and expenses all may be associated with mutual fund investments. Please read the prospectus before investing. The indicated rates of return are the historical annual compounded total returns net of fees and expenses payable by the fund (except for figures of one year or less, which are simple total returns) including changes in security value and reinvestment of all dividends/distributions and do not take into account sales, redemption, distribution or optional charges or income taxes payable by any securityholder that would have reduced returns. Mutual funds are not guaranteed, their values change frequently, and past performance may not be repeated.

³ Please refer to the fund's simplified prospectus for distribution information.

⁵ The portfolio holdings are subject to change without notice and may only represent a small percentage of portfolio holdings. They are not recommendations to buy or sell any particular security.

The contents are not to be used or construed as investment advice or as an endorsement or recommendation of any entity of security discussed.

Certain statements contained in this communication are based in whole or in part on information provided by third parties and CI has taken reasonable steps to ensure their accuracy.

The rates of return are used only to illustrate the effects of the compound growth rate and are not intended to reflect future values or returns on investment in an investment fund.

The "Growth of \$10,000 invested" chart shows the final value of a hypothetical \$10,000 investment in securities in this class/series of the fund as at the end of the investment period indicated and is not intended to reflect future values or returns on investment in such securities.

Management Expense Ratio ("MER") represents the trailing 12-month management expense ratio, which reflects the cost of running the fund, inclusive of applicable taxes including HST, GST and QST (excluding commissions and other portfolio transaction costs) as a percentage of daily average net asset value the period, including the fund's proportionate share of any underlying fund(s) expenses, if applicable. The MER is reported in each fund's Management Report of Fund Performance ("MRFP"). MRFPs can be found within the Documents tab on ci.com.

CI Global Asset Management is a registered business name of CI Investments Inc.

©CI Investments Inc. 2025. All rights reserved.

Published January 2026